

CLAUSE 18 TEST CONTINUED ILLUSTRATION

Below the 3 categories of reading glasses are to compared to each and all of the different Powers extended to each of the 3 branches of government. Each color of glasses represents a different branch of government's powers, belonging to that branch of government only.

Thus, the question is raised: If a pair of glasses (Power) belonging to one branch needs to be examined close up using another pair of glasses, would the branch called upon to perform the scrutiny of the glasses (specific Power) of another branch use a pair of glasses (Power) belonging to the other branch, and not to itself, to perform the examination, or would it use its own glasses (Power) to do that with.

As seen through the eyes of logical reasoning science, the vision of the one branch would not be reliably fitted to be able to correctly or truly utilize the glasses (Power) of another branch but could only soundly rely upon or use its own pair of glasses (Power) alone, else if using another's pair of glasses (Power) instead, it would employ whatever defect by such use brought about by use of glasses (a Power) not its true own glasses (Power) and not obtain a necessary and correct vision that it would obtain if relying upon its own glasses (Power) as would be the case if it had acted properly toward using that which it alone owned and not that owned by another.

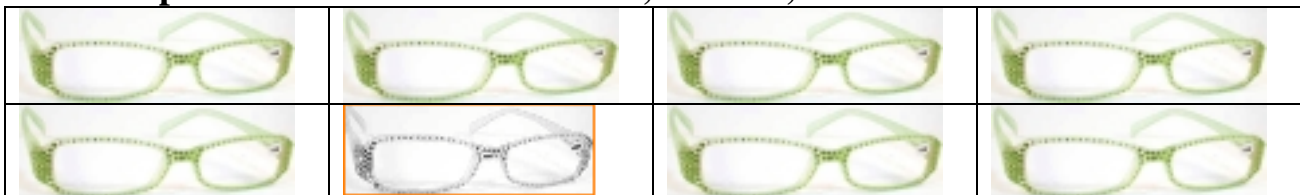
The Congress' Glasses / *19 Original Positive, Extended Powers:



The President's Glasses / Positive, Extended Powers:



The supreme Court's Glasses / 8 Sole, Positive, Extended Powers:



The Grayed Pair of Glasses represents Extended Power Number 6, which was nullified or amended out of Power by the Eleventh Amendment, leaving only 7.